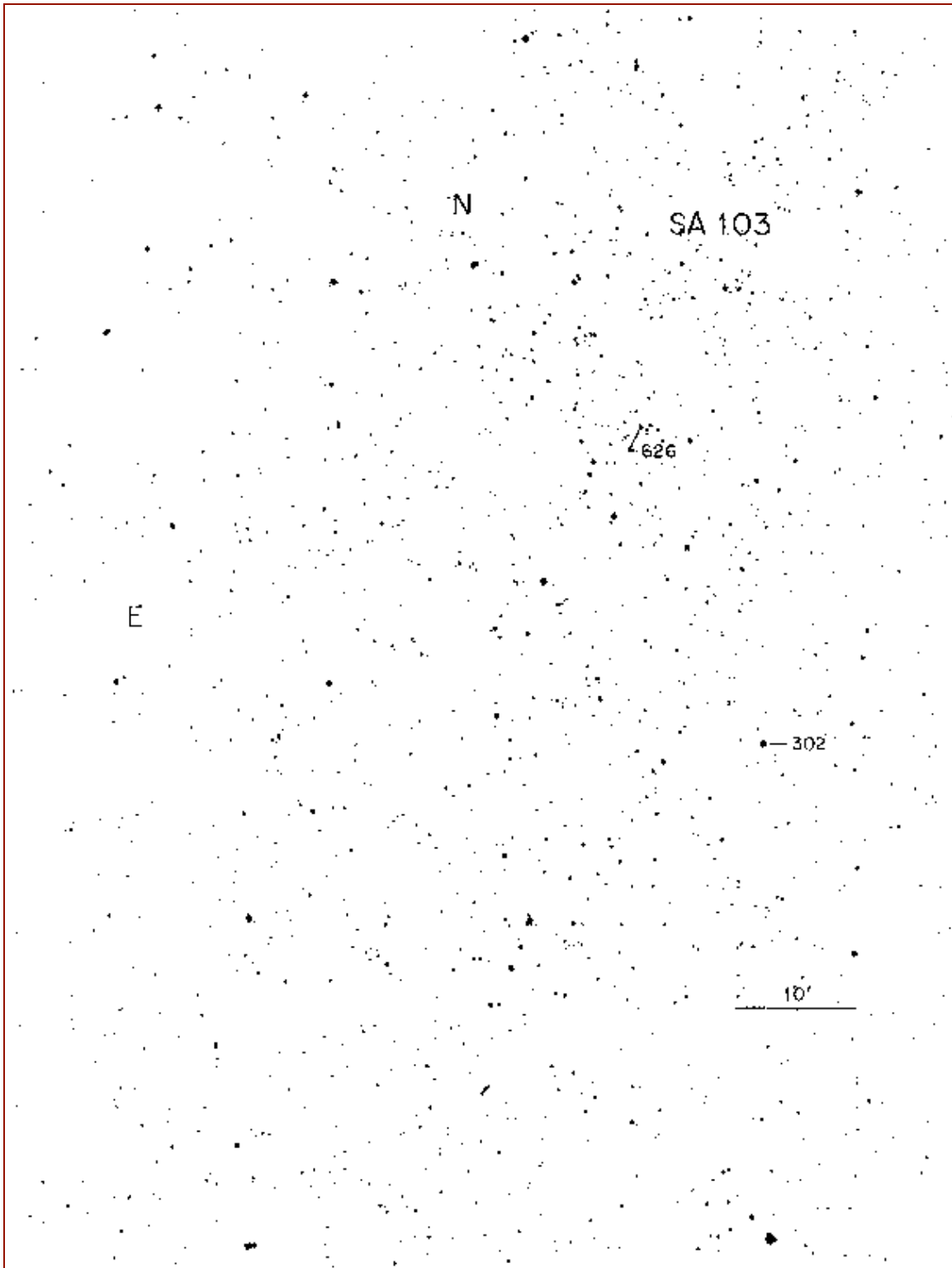
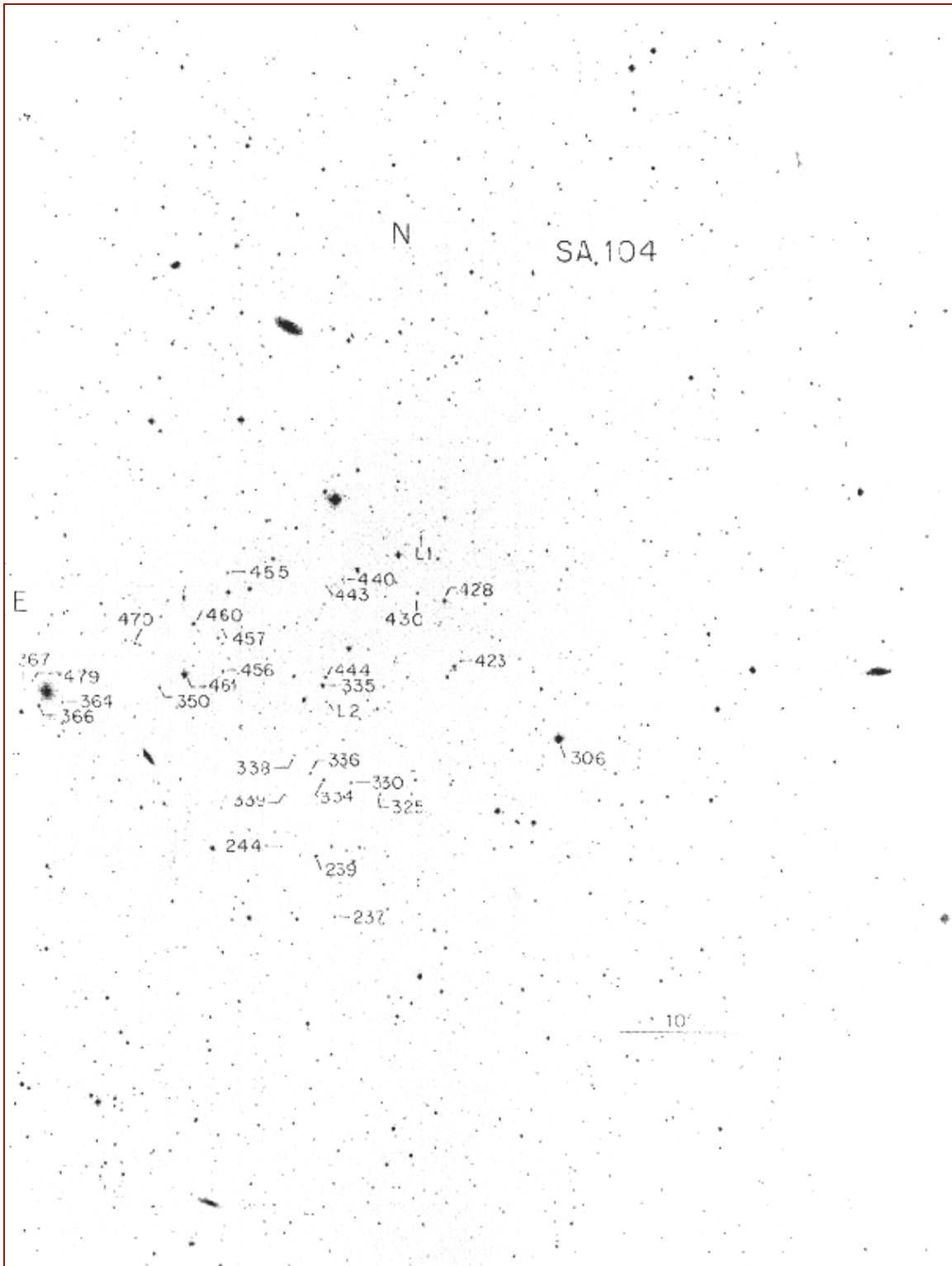


## Landolt Standard Calibration Stars for May observing



Star	RA2000	DEC2000	V	B-V	U-B	V-R	R-I	V-I
103 302	11 56 06	-00 47 54	9.86	0.368	-0.056	0.228	0.237	0.465

## Landolt Standard Calibration Stars for May Observing



Star	RA2000	DEC2000	V	B-V	U-B	V-R	R-I	V-I
104 306	12 41 04	-00 37 15	9.37	1.592	1.666	0.832	0.762	1.591